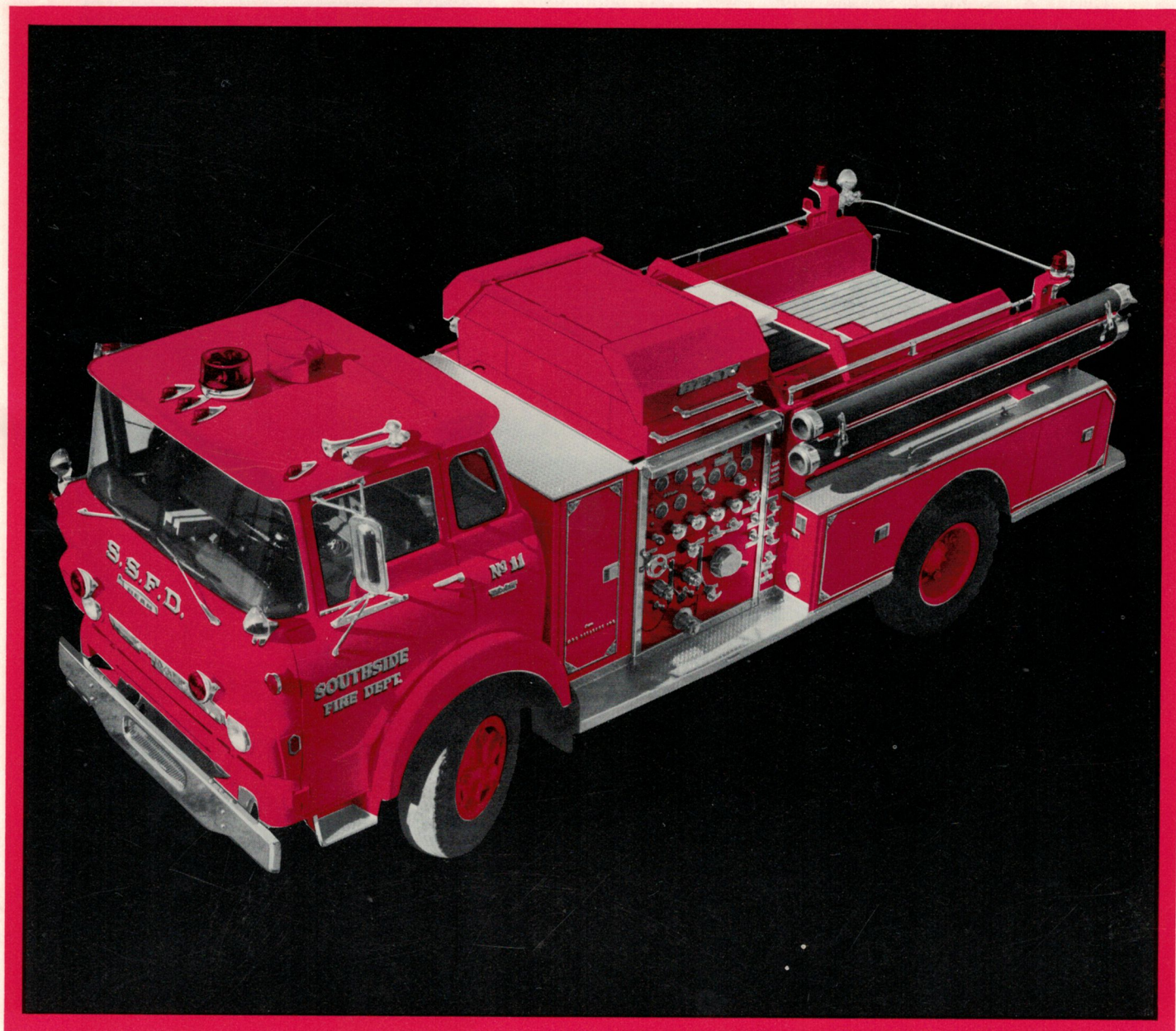




**HIGH PRESSURE FOG—THE LEADER
IN HIGH PRESSURE PUMPS
SINCE 1884**

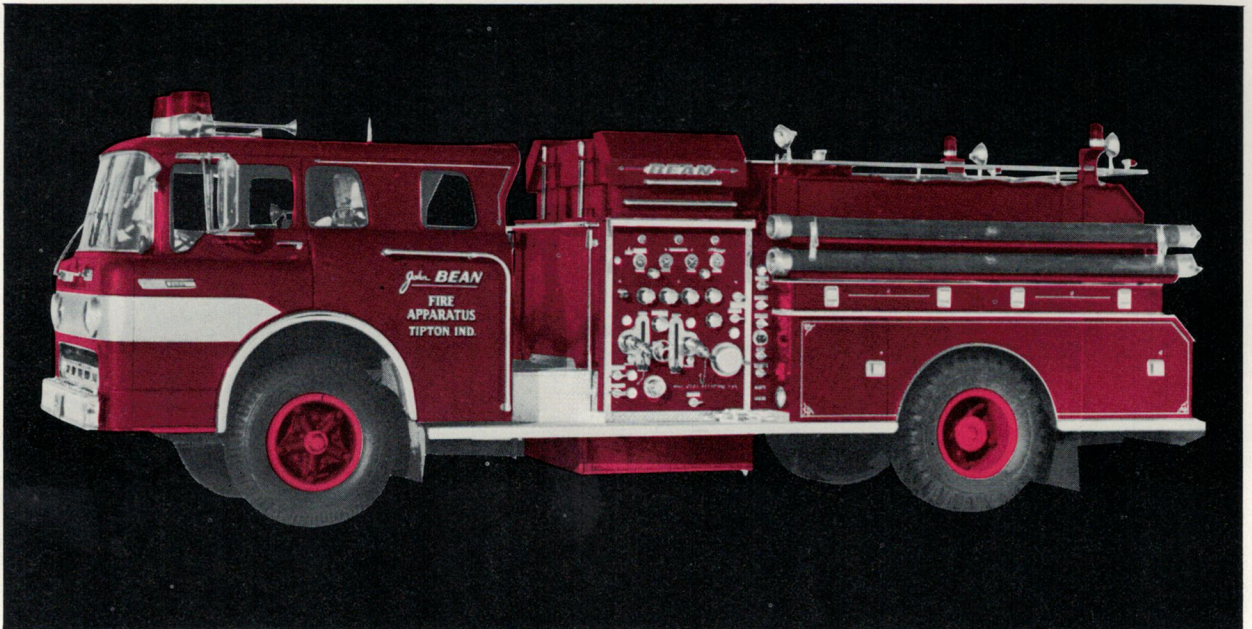
**VOLUME—CAPACITIES
TO 1750 GALLONS
PER MINUTE**



FIREFIGHTERS

BEAN MEANS ENGINEERED PERFORMANCE

Designed, tested and built for superior quality and performance. Bean Firefighters have proven their dependability in community service the world over. Engineering "know how", based upon decades of experience, insures rigid quality standards in every unit. Our famous Bean pumps exemplify Bean's dependability. The efficient high pressure pump is unmatched for true high pressure fog fire fighting. The Class "A" centrifugal volume pump meets every performance standard. Depend on Bean Firefighters—built better to meet your needs.



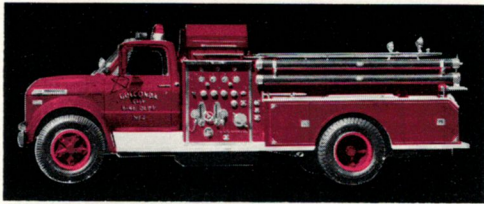
HPV* FIREFIGHTER Top of the line Bean Class "A" triple combination pumpers, plus Bean high pressure fog system. Pumps are UL approved for 70 GPM at 850 PSI and from 500 to 1750 GPM volume. All to be mounted on a custom, semi-custom, tilt or conventional chassis. See details on following pages.

FEATURING ORIGINAL HIGH PRESSURE FOG

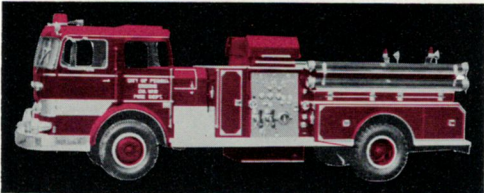
Bean original high pressure fog is a scientific, proven, fire fighting method distinguished from all other types. Operating at 850 PSI, the rugged Bean pump produces microscopic fog particles discharged from the patented Bean fog gun. Driven at high velocity to the heart of the fire, these particles have many times the surface area and heat absorption power of a low pressure stream. One gallon of water as high pressure fog has the killing power of ten or more gallons discharged in a volume stream.

*HPV—High Pressure Fog and Volume (Combination Unit).

WRITE FOR SPECIFICATIONS



**CLASS "A"
TRIPLE
COMBINATION**

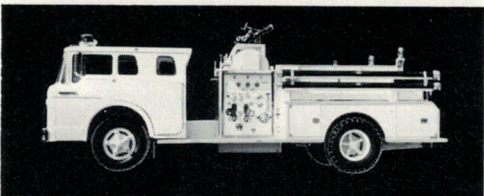


**BEAN
CUSTOM**

VOLUME PUMPERS

Featuring Bean's quality designed twin stage volume pumps—engineered for peak performance plus ease-of-service. Capacities 500 GPM to 1750 GPM. All models are complete with Bean manufactured pumps, relief valves, hose reels, swivels, nozzles, Polyclutch lined booster tanks, panels, compartments and electrical systems. See details on following pages.

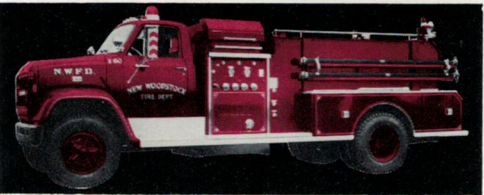
High Pressure Fog, Combinations or Volume Pumpers with Conventional Tilt or Custom Cabs are available.



**BEAN
SEMI-CUSTOM**



**BEAN
ECONOPAC**



HPF* FIREFIGHTER

The original high pressure fog firefighter featuring the Bean 70 GPM at 850 PSI patented and UL approved high pressure pump. This pump has a PTO drive for pumping on the run. Ideal fire protection where water supply is limited. Same quality standard maintained throughout. Tank sizes 500, 750, or 1000 gallons. See compartment details on pages 10 and 11.



"FIRST-OUT" MODEL 250-F

Bean 70 GPM at 850 PSI pump with PTO drive—250 gallon Polyclutch lined tank—special body compartments with approximately 60 cubic feet of storage space. See page 8 for details.



65-75-85-100 FOOT AERIALS

Rugged all steel ladders, lengths to meet your department needs, complete with dual hydraulic controls for speed and safety. Hydraulically operated 360° turntable and outrigger jacks with large capacity hydraulic oil reservoir.

*HPF—High Pressure Fog Unit.

High Pressure Fog, Combinations or Volume Pumpers with Conventional, Tilt or Custom Cabs are available.

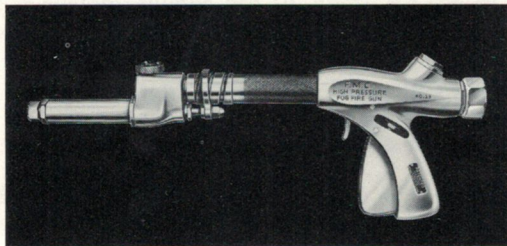
NOTE: Bean reserves the right to incorporate changes in design or materials without obligation of incorporating same on machines of prior manufacture.

THE ORIGINAL HIGH PRESSURE FOG

Within thirty seconds—three quick operations—you're in action with Bean High Pressure Fog Firefighters. Engage the pump, close one valve, adjust throttle for RPM's and the hose lines are ready. This kind of speed for fast fire attack adds hard-hitting fire killing power to any metropolitan or rural department. With Bean Original High Pressure Fog Apparatus, you can extinguish more than 95% of your fires faster, use 90% or less water with greater safety, and with little or no water damage.

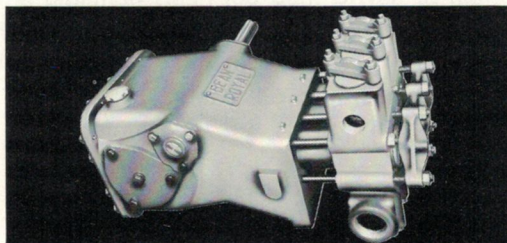


All Purpose Versatility—The Original High Pressure Fog.



BEAN PATENTED FOG GUN

Easy to operate with instant on-off trigger control and face protecting spray for close approach. Rotating barrel permits quick selection of complete range of patterns from close-up to long range fog.



BEAN (UL APPROVED) HIGH PRESSURE PUMP

Produces **true** high pressure fog of 70 GPM at 850 PSI through two hose lines. Self-priming from draft, tank or hydrant. Famous for its dependability, ability to stand up to hard use, and its ease-of-service. Due to its low RPM's and self-lubricating design, it has proven itself world wide. Other important features are fully enclosed working parts; forged steel crankshaft; heavy duty bearings; positive-action spring-loaded stainless steel poppet valves; steel backed hardened ceramic cylinders, composition plunger cups—all tested for fire department service.

Multi-Purpose High Pressure Fog and Volume Firefighters for hard-hitting, fire-killing power.



CLASS "A" VOLUME PUMPS

Volume or Series Centrifugal Pumps. Capacities 500—750—1000—1250—1500 and 1750 gallons per minute.

RELIEF VALVE

All working parts coming in contact with water are bronze, stainless steel, or Neoprene. When desired PSI is reached, the unused pump output is transferred back into the pump suction inlet.

ACCESSIBILITY AND SERVICEABILITY

One-piece manifold design. No need to dismantle piping, paneling, or drive train when checking impellers or gear section.

ILLUMINATED OPERATOR'S PANEL

Full width of panel is illuminated to eliminate gauge shadows. All gauges, valves and controls, are grouped for ease of operation.

REAR MOUNTED 50-GALLON FUEL TANK

Standard on all HPF, HPV and VOL models. Located at rear of apparatus away from exhaust heat, or other inconvenient location. Can be removed easily for repair. Full 3" filler opening direct into tank eliminates messy spills.

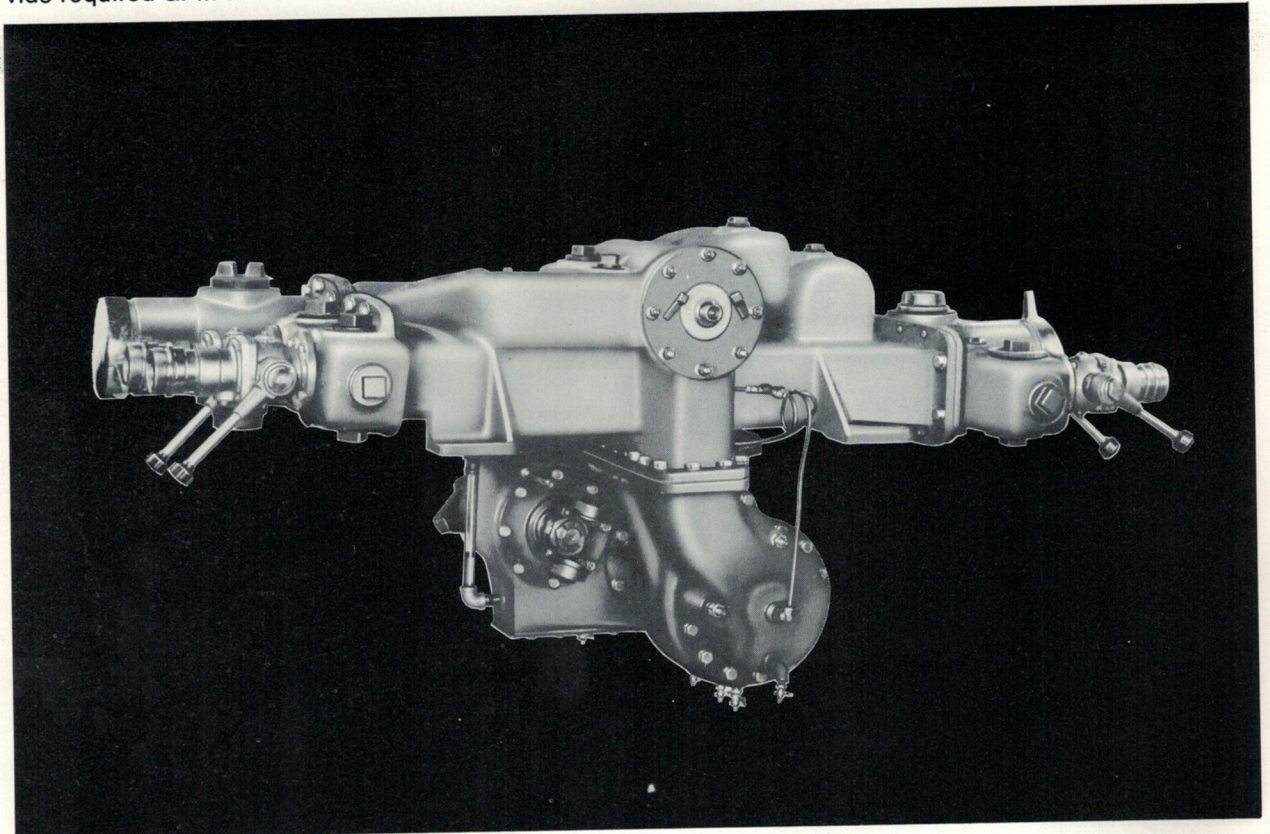
BEAN—PLUS

Designed, engineered and manufactured to assure the highest quality, plus **one source service** for Bean apparatus, pumps, relief valves, primer, gauges, swivels, hose reels, high pressure hose, gas tanks, panels, compartments, booster tanks, electrical control systems and fog guns.

BEAN PUTS MORE IN . . .

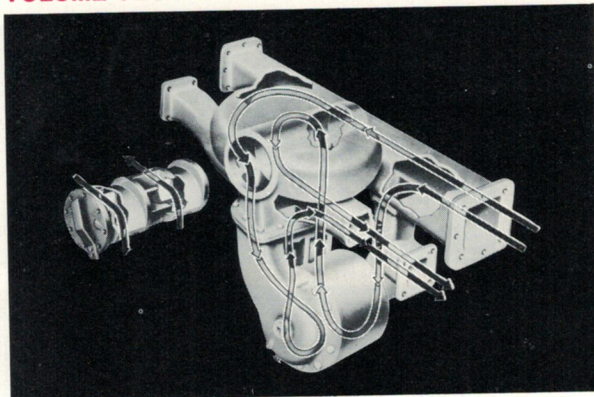
BEAN TWIN STAGE VOLUME PUMPS

Class "A" Centrifugal Volume Pumps. Quality, dependability and serviceability. Your guarantee to provide required GPM and PSI.



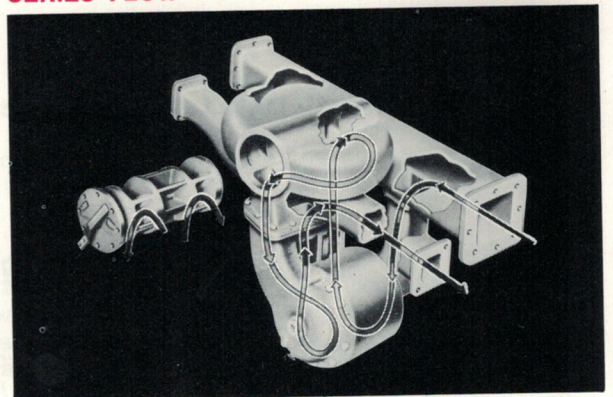
TRANSFER VALVE—VOLUME TO SERIES

VOLUME FLOW

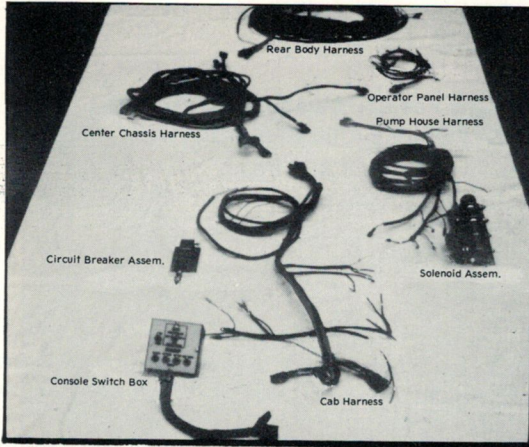


Bronze rotating cylinder-type designed for ease of operation. Engineered to eliminate friction loss and

SERIES FLOW



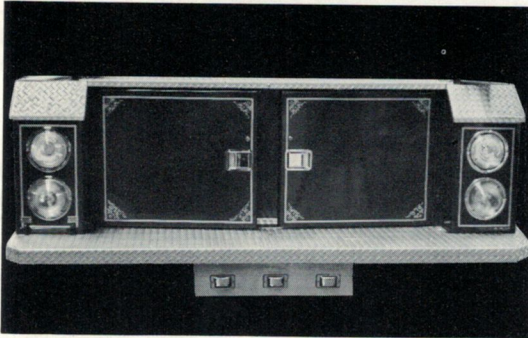
outmoded clapper valves. Hand wheel control is located at operator's position.



NEW ELECTRICAL CONTROL HEAD WITH POSITIVE MASTER SWITCH

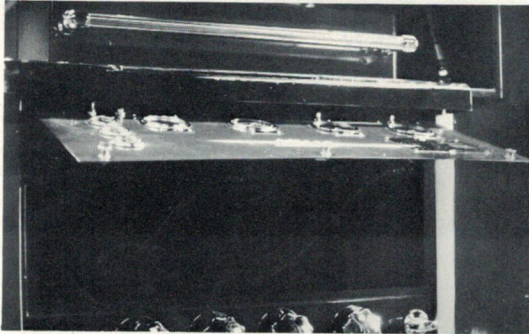
A lighted electrical control console, mounted in apparatus cab, within easy reach of driver or officer. Provides positive identification of all standard emergency switches.

SERVICEABILITY: Numbered and color coded unitized wiring loom, with plug-in sections to eliminate guesswork when checking or adding to system.



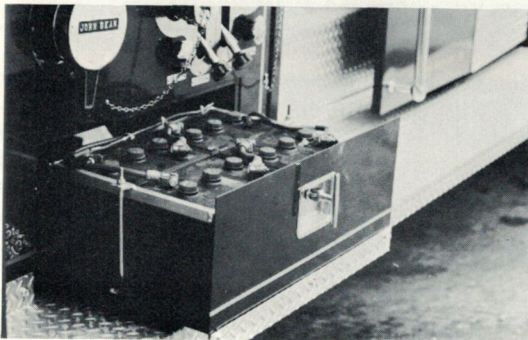
TAIL AND BACK-UP LIGHTS

Standard specifications provide one red tail light and one clear back-up light each side. Tail lights are connected to chassis turn and hazard warning switch.



GAUGE PANEL AND PUMP ACCESS DOORS

Bean's gauge panel and service doors, one each side, permit prompt access to the upper pump housing area without the need of tools. Unlock three latches, swing-up, and a spring-loaded bar locks the door open. Full access for inspection and service.

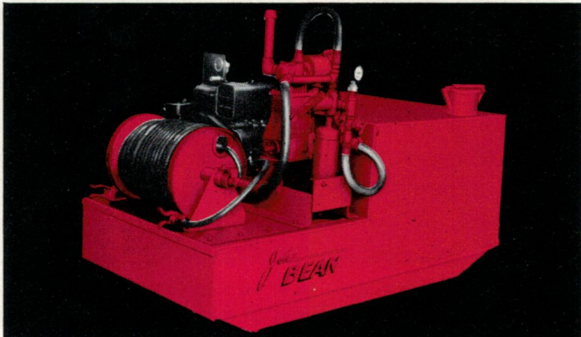
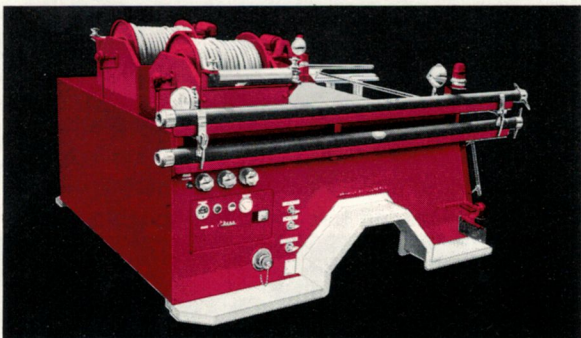
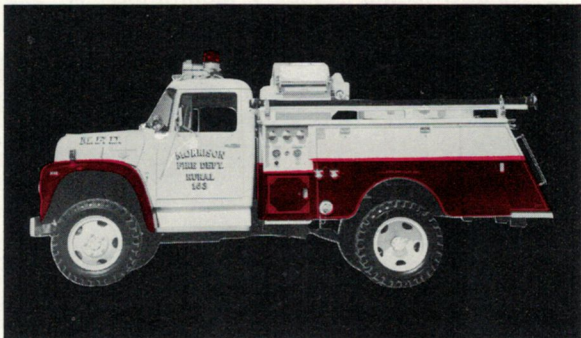


SLIDE-OUT BATTERY TRAY

Features ball-bearing slide-out for easy servicing. Flush-type chrome plated T-Handle latch provides positive lock for battery compartment. Bean's slide-out tray means less down time for battery service.

"FIRST-OUT" MOBILITY

BEAN FIREFIGHTERS WITH HIGH PRESSURE FOG



- Go To Fires Faster—Maneuverability Plus.
- In Action Seconds After Reaching Fire.
- Control Over 90% Of All Fires
- Fight Grass, Brush, And Forest Fires—On The Run.
- Lower Initial Cost.

BEAN MODEL 250-F—PTO DRIVE

These compact, hard-hitting firefighters have the speed and mobility to get to fires faster and are ready for action within seconds. A 2-man crew, each man armed with a Bean High Pressure Fog line, delivers a fire-smothering fog immediately upon arriving at the blaze. The triple-action high pressure fog, 70 GPM at 850 PSI, cools, isolates, and smothers all types of fires, enabling faster, more effective control.

BEAN MODEL 200-FW—ENGINE DRIVE

Ideal for the fast knockout of forest, grass and brush fires. Municipal departments find these Bean Auxiliary Firefighters ideally suited as a "First-Out" truck, particularly for still alarms. Rural areas find their mobility, fire-killing punch, and economy, are the perfect answer to their protection problems. Reinforced body construction is ideal for rugged, rural service. Approved, non-skid, tread plate on rear platform adds to safety.

BEAN MODEL 200-FW—DROP-ON

Drop-On Unit is a self-contained firefighter. Complete with Bean UL approved high pressure systems, 70 GPM at 850 PSI pump, relief valve, hose reels with 400 foot of 3/4" high pressure hose, nozzles, 200-gallon steel tank, running board and rear platform. All to be mounted on your chassis, trailer, or flat bed. Secure with bolts and you are ready to roll.

MOUNT ON MOST STANDARD 12,000 GVW TRUCK CHASSIS WITH 60" CA DIMENSION

BEAN MODEL T-201FD—SLIDE-ON UNIT

Slide-On Unit is an economical standby fire-fighter complete with Bean 10 GPM at 500 PSI high pressure pump powered by a self-starting engine with 200-gallon L-shaped steel tank, hose reel, hose and nozzle. Can be used at any location where a lift or pickup truck is available on a moment's notice. A good unit for industry, highways, resorts, forests, parking lots and ramps.

Model ST-201FD is same as above, except it has a 100-gallon tank for mounting on Jeeps, Scouts and Broncos. Write for detailed information.

FOR PROOF OF BEAN FIREFIGHTER EFFECTIVENESS—WRITE TODAY FOR A DEMONSTRATION

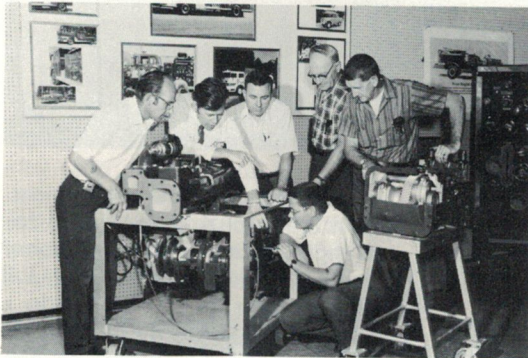
LEARN FROM THE PROS

STANDARD FOR EVERY BEAN FIREFIGHTER



CLASSROOM DISCUSSIONS

Advanced features of the Bean Firefighters, plus what happens behind the panel. Preventive maintenance and general pump theory. An exchange of thoughts where firemen and manufacturer are face-to-face.



ACTUAL SERVICE TRAINING

When you take delivery of your new Bean, you and your community will sleep easier because of the service training you will receive from factory trained experts. This training is part of the package received when you purchase your fire apparatus from Bean.



TESTING EQUIPMENT

Getting the feel of it! Moving out of the classroom, the firemen learn first hand from factory specialists. A comfortable feeling to know that both firemen and apparatus are ready for the task ahead.



CUSTOMER TAILORED TRAINING

The Bean School has been well known in the industry for many years. It offers every Bean customer and friend, an opportunity to learn and use his apparatus more effectively.

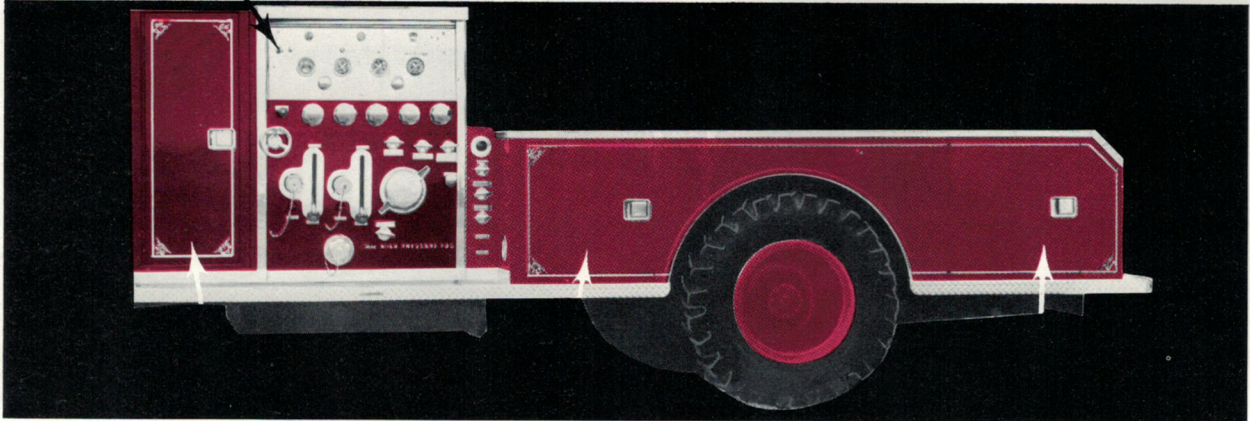
Training at the factory includes: **live fire fighting** of several types . . . **detailed classroom instruction** . . . the opportunity to **pump and inspect your own unit** . . . **before** taking it home.

CABINETS DESIGNED FOR SERVICE

FORWARD TUNNEL—SPACIOUS SIDE COMPARTMENTS—PLUS REAR COMPARTMENTS

Master Light Switch on operator's panel controls all compartment lights.

Rear Compartment—Standard—
See Style No. 1 opposite page.

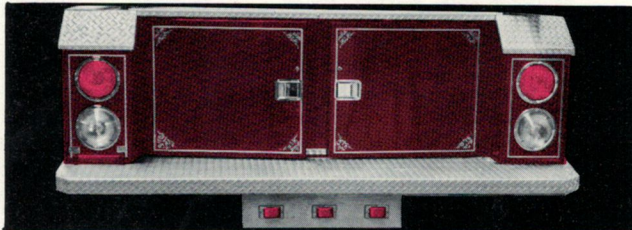


FORWARD COMPARTMENT
standard on tilt and custom chassis, optional on conventional chassis, 22¼" wide x 52" high x 72" side to side.

FRONT SIDE COMPARTMENTS
left and right sides with chrome plated, flush-type paddle latches, 27¼" wide x 27½" high x 23½" deep.

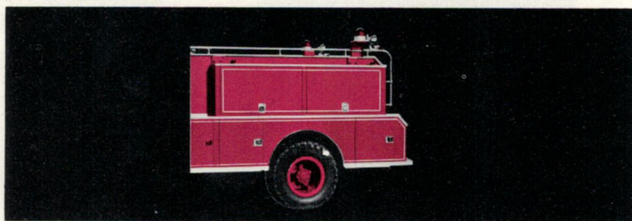
REAR SIDE COMPARTMENTS
one each side. Like all side doors, double folded and lined for strength. Complete with rubber channel seals and heavy duty full length piano hinges, 23" wide x 27½" high x 25½" deep (plus bustle safety and storage space).

BEAN CUSTOM CABINETRY



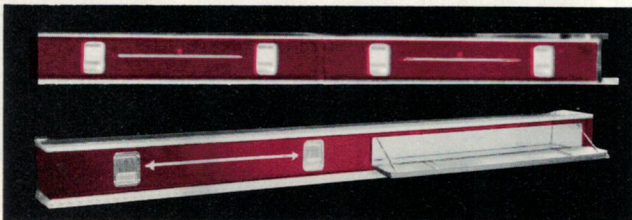
REAR COMPARTMENTS

See opposite page for other optional rear compartment styles.



UPPER SIDE COMPARTMENT

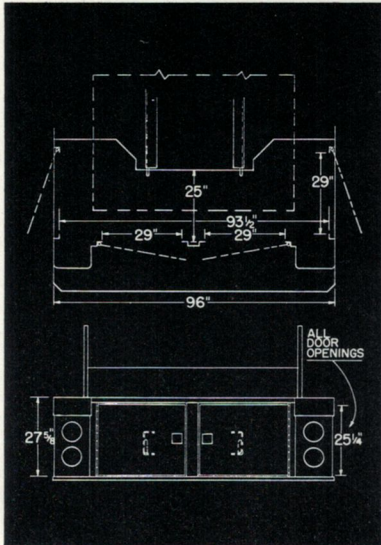
Has two side doors, hinged at the top. Each door has two slide locks to hold open, 29" high x 11½" deep x 104" long.



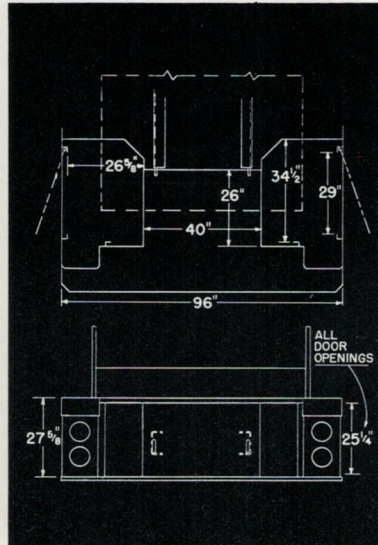
AUXILIARY BODY COMPARTMENT

Has two drop-down doors. Compartment 12⅝" high x 11½" deep x 104" long.

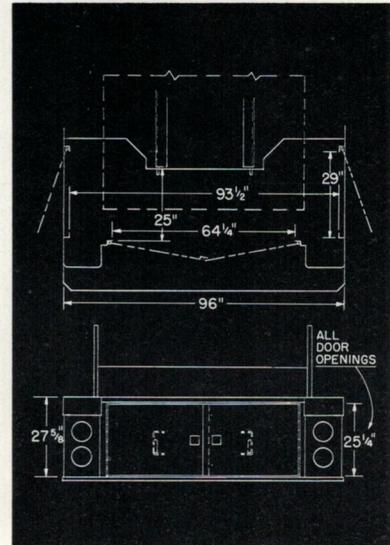
BEAN REAR COMPARTMENT OPTIONS



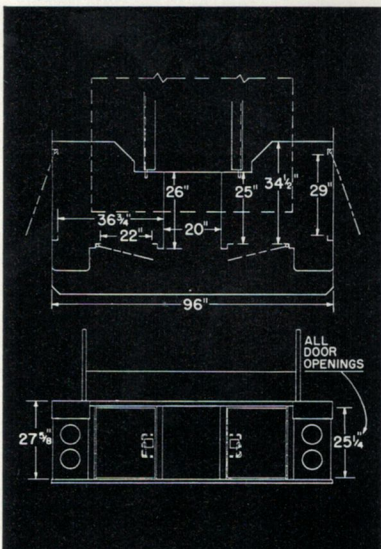
STYLE NO. 1 Accessible through side and rear doors, for large items such as stretchers, generators, portable pumps, eductors and other tools. NOTE—Center Slam Strip.



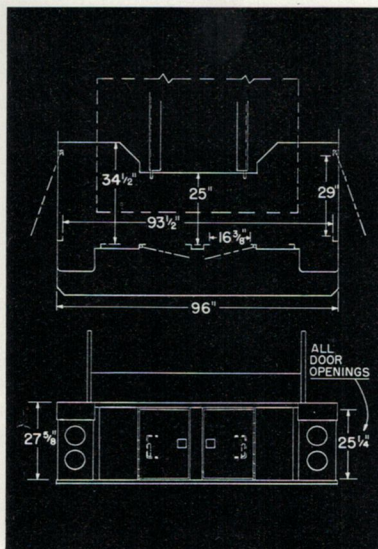
STYLE NO. 2 Provides open center section for rear suction and hose—dump valve, hose reel, pumps, generators, or other equipment.



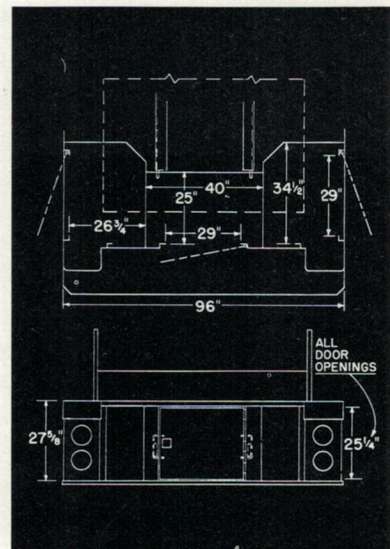
STYLE NO. 3 Same as Style No. 1, but has no center slam strip. Requires overlapping rear doors.



STYLE NO. 4 Provides smaller open center than Style No. 2. Has two rear doors connecting to side compartments.



STYLE NO. 5 Approximately same as Style No. 1 NOTE—Two rear doors are smaller.

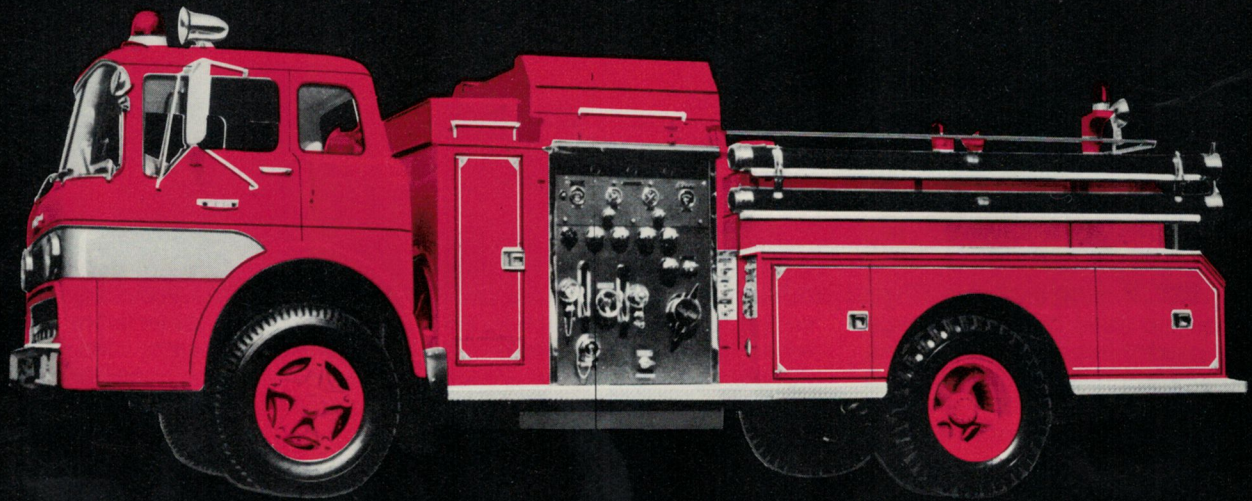


STYLE NO. 6 Features one single rear door.

NOTE: Style No. 7 same as No. 4 with door on center compartment.
 Aluminum overlays for rear are available.
 Partitions can be located in rear compartment to fit your needs.
 Measurements are minimum.

fmc
BEAN

HOME OF THE SUPER PUMPERS



BEAN has been engaged in the manufacture of scientific fire protection for over forty years and is well qualified and experienced to serve the fire protection needs of cities, communities, industry and governmental organizations, whatever their needs may be. Over these years, Bean has produced fire fighting apparatus for Municipalities, Villages, Volunteer Departments, Airports, Industry and the U.S. Government. Bean Apparatus is used World-Wide . . . from the northernmost regions of Denmark to the southern tip of Chile. It's Bean's Pledge—"To Serve You Well".



JOHN BEAN DIVISION

SCIENTIFIC FIRE PROTECTION · TIPTON, INDIANA 46072 · 317/675-2187